

# system requirements

In order to use the ICON 225, your laptop, PC or Mac will need to meet the following requirements:

- **Operating Systems**
  - Windows® Vista
  - Windows® XP Service Packs 1 & 2
  - Windows® 2000 Service Pack 4
  - Windows® XP Tablet PC Edition, 2005 Service Pack 2
  - Mac OS X Version 10.3.x, 10.4.x and 10.5.x
  - 128MB RAM
  - 5MB minimum disk space

# register with Orange

Before you begin using your ICON 225, you'll need to register with Orange.

Please call Orange Registrations on **980** from your Orange phone or **07973 100 980** from any other phone.

You will be asked for the following information:

- 1 The 15 digit serial (IMEI) number, which is on the back of your ICON 225.



- 2 The SIM card number, which is on the back of your SIM card.



- 3 A password for security purposes.

- 4 Your address including the postcode.

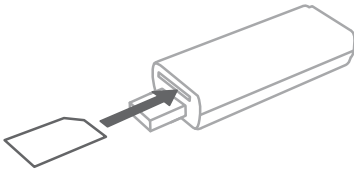
Your ICON 225's phone number will be provided on purchase or when you call to register.



## preparing for first use

Follow these three simple steps to install your ICON 225 and prepare it for your first Internet connection.

**Step 1** – Insert the SIM card into the slot on the front of the device, located directly above the USB connector.



**Step 2** – Start your computer. Insert the ICON 225 into a free USB port on your computer.



To prevent your ICON 225 being accidentally knocked and potentially damaging your laptop, PC or Mac, we recommend that you always use the extension cable provided.

# connecting to the internet

## Step 3 A – For Microsoft Windows operating systems:

The software and driver installation will start automatically.\*



After a short period of time, you will see the following message:



Once installed, an Orange icon will appear on your desktop:



You are now ready to connect to the Internet.

To connect to the Internet, double-click the Orange icon on your desktop to start the ICON 225 USB Connect application then just click "Connect" to access the internet.

\* Note: If you have CD autorun disabled on your laptop or PC, the software installation will not automatically begin. In this case, the device will appear as a new drive on your system called "ICON 225 USB Connect". Go to the new drive and simply double-click on the "setup.exe" file to install the software.

# connecting to the internet

## Step 3 B – For MAC operating systems:

The Software and Driver installation will start automatically.



Double click the ICON 225 USB Connect.mpkg icon to start the installation. Click "continue" and follow the on-screen instructions. When the "successful installation" screen appears, you are ready to connect to the Internet.



To connect to the Internet, double-click the Orange icon on your desktop to start the ICON 225 USB Connect application then just click "Connect" to access the internet.



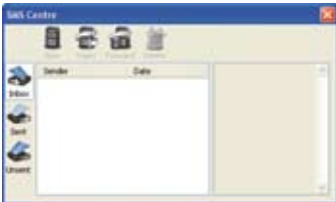
# useful information

If you need to contact us for support or a general query, Orange Customer Services are available 24 hours a day, 7 days a week, 365 days a year. Alternatively visit the Orange website at [www.orange.co.uk](http://www.orange.co.uk) for more details

Call Orange Customers services on **150** from your Orange phone or **07973 100 150\*** from any other phone.

## SMS

The ICON 225 USB Connect application can also be used to send and receive SMS messages. Click on the "SMS Centre" button to send or receive messages\*\*.



## Roaming

Please note that data usage whilst roaming will not be deducted from any domestic bundle or unlimited data tariff. Roaming will be charged at a separate per MB rate and will be dependent upon the country of use. Please see [orange.co.uk/international](http://orange.co.uk/international) for specific pricing.

To enable roaming please call Orange Customer Services on **150** from your Orange phone or **07973 100 150\*** from any other phone.

\* Charged at BT 'F' rate if you call from a BT fixed line.

\*\* All SMS messages are sent at the appropriate standard rates , see Orange website at [www.orange.co.uk](http://www.orange.co.uk) for details.

The information contained in this user guide is correct at the time of going to press, but Orange reserves the right to make subsequent changes to it and services may be modified, supplemented or withdrawn. May 2008.